

Status report

Yonsei Univ.

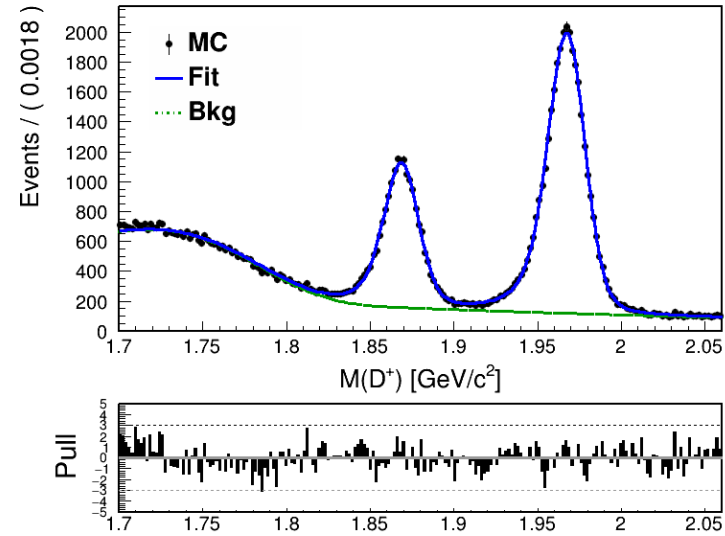
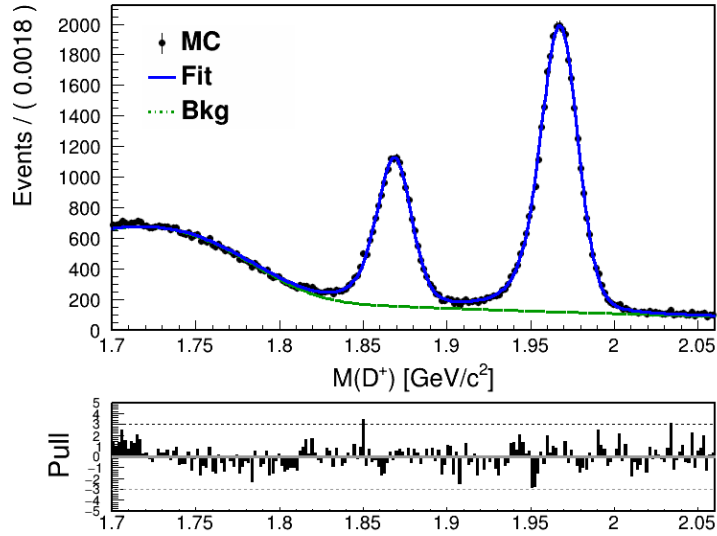
Jaeyoung Kim (jaeyoung_kim@yonsei.ac.kr)

2024.11.12.

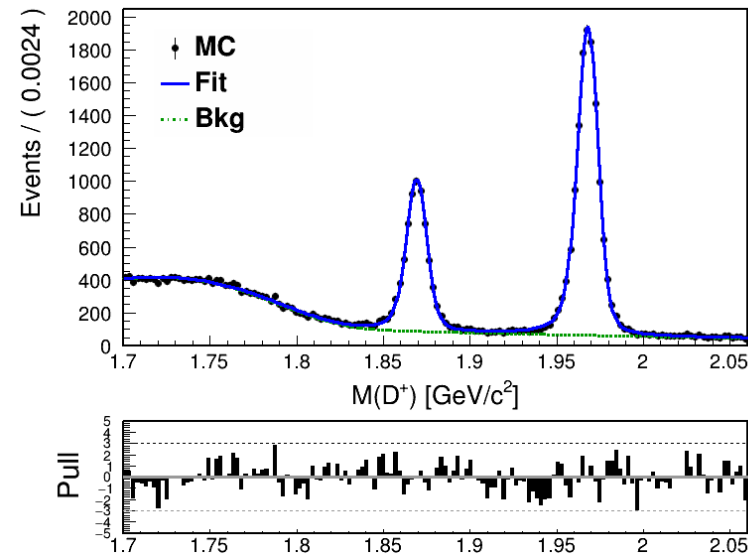
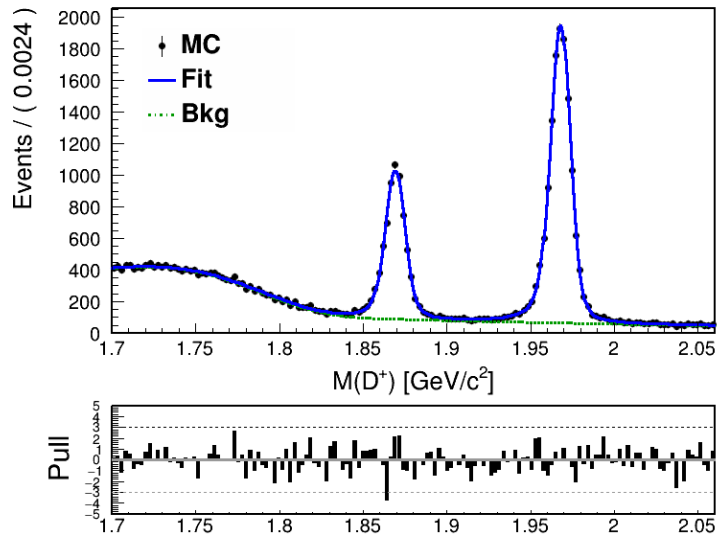
$D^+ \rightarrow \eta\pi^+$

- Scaled down to 427.87/fb

PDG: $(0.3 \pm 0.5)\%$
PDG_Ds: $(0.32 \pm 0.3)\%$



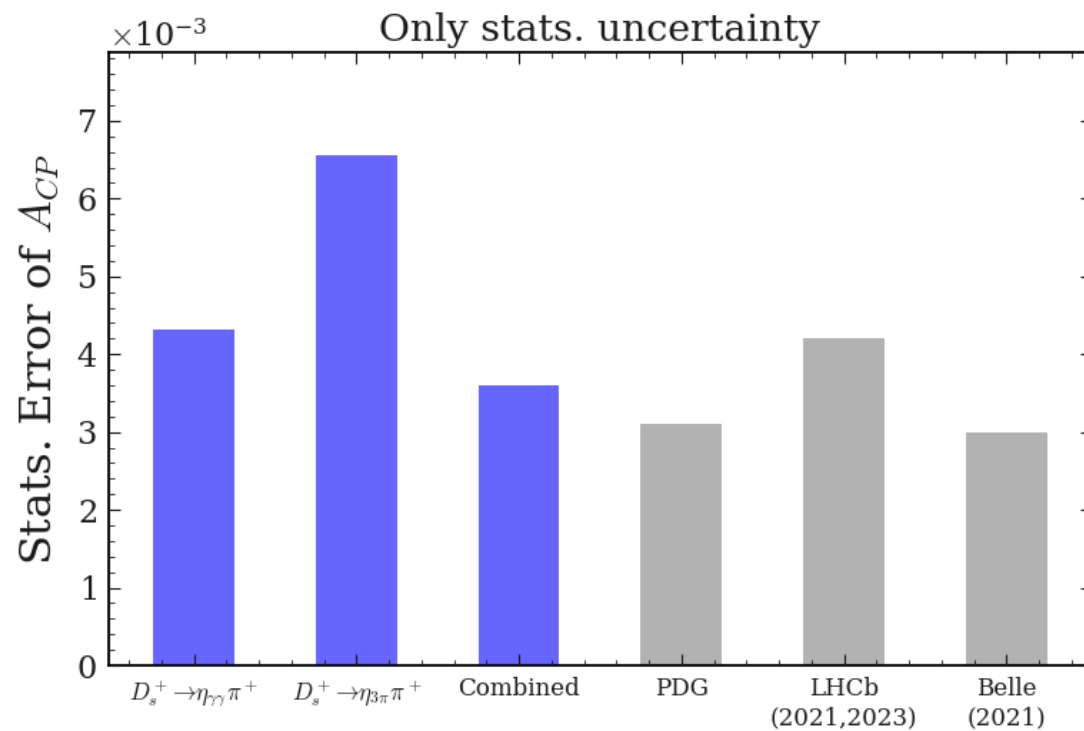
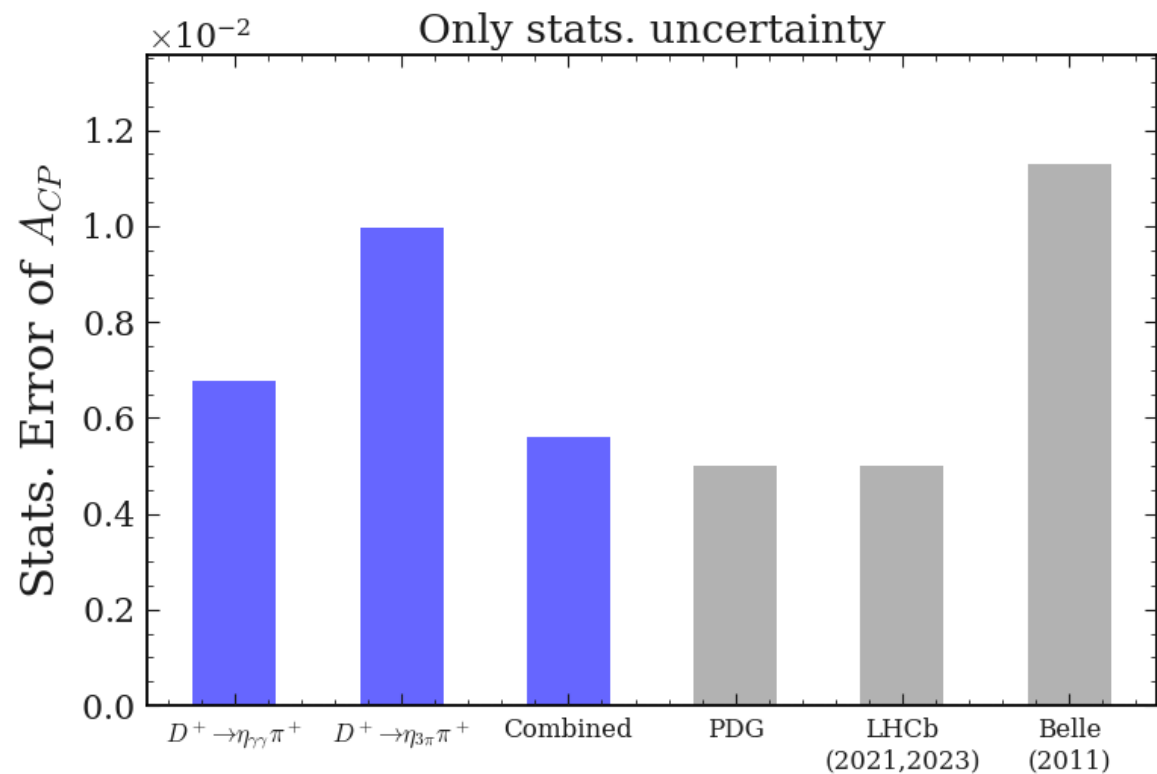
$A_{cp,raw} = (0.0924 \pm 0.678)\%$
 $A_{cp_Ds, raw} = (-0.0313 \pm 0.431)\%$



$A_{cp,raw} = (0.910 \pm 0.997)\%$
 $A_{cp_Ds, raw} = (0.247 \pm 0.656)\%$

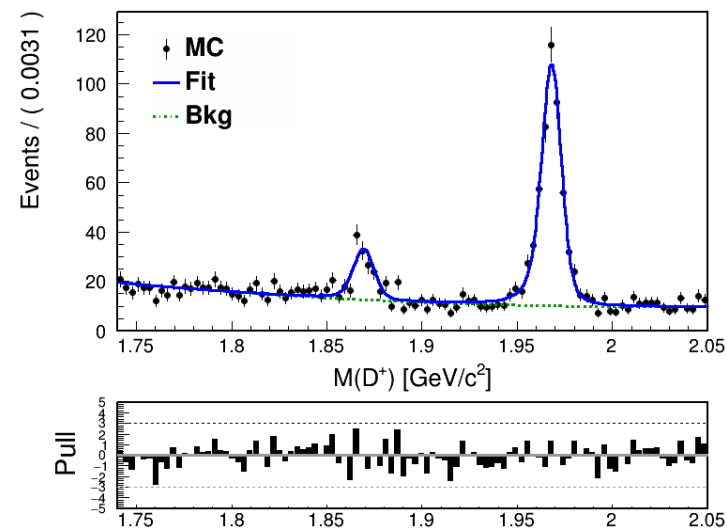
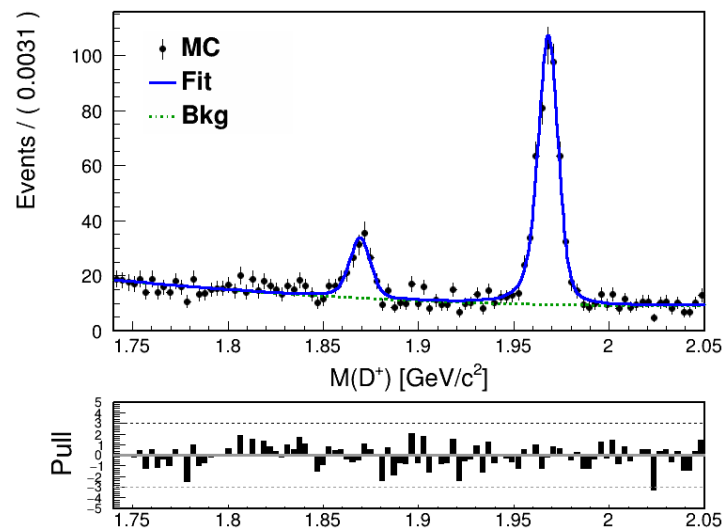
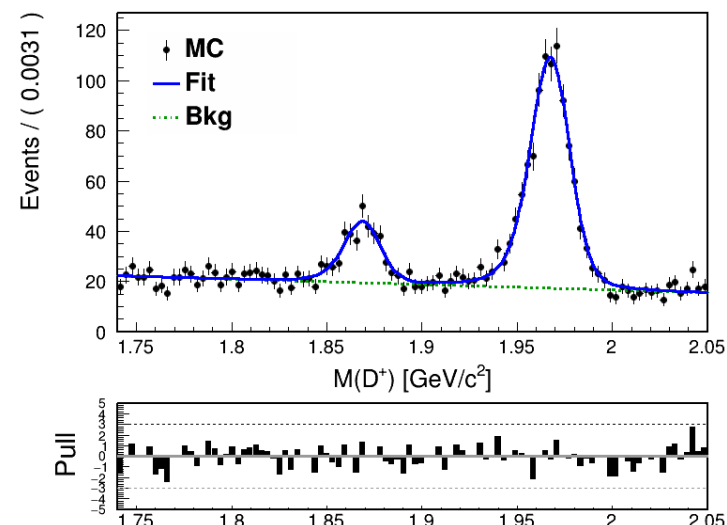
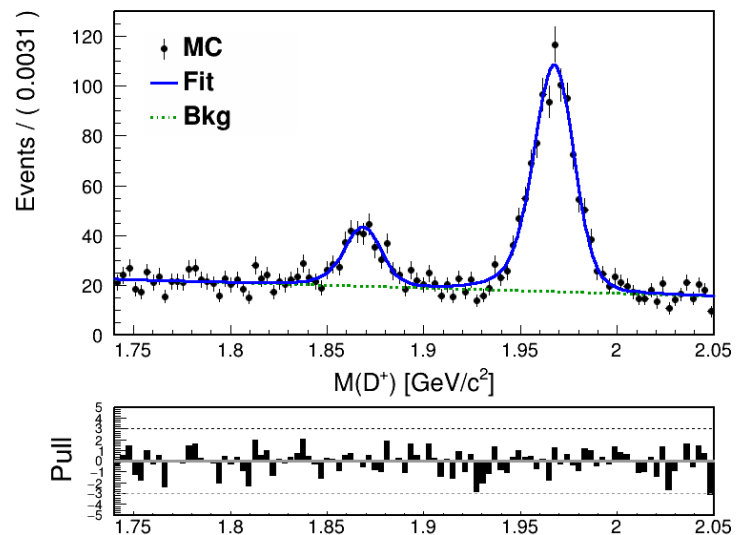
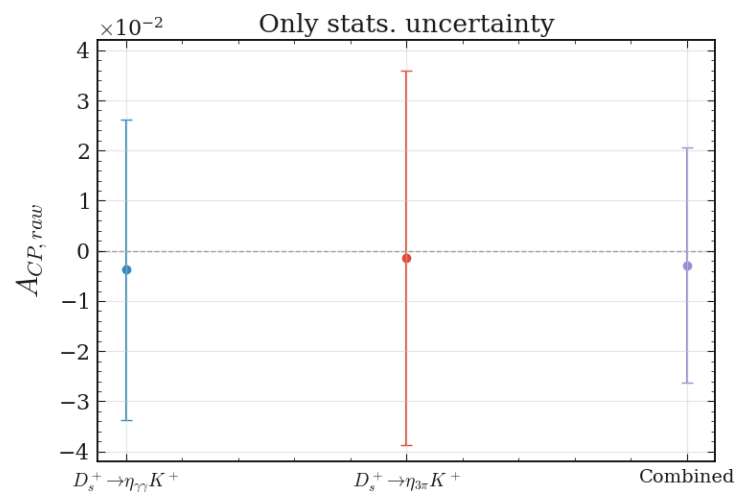
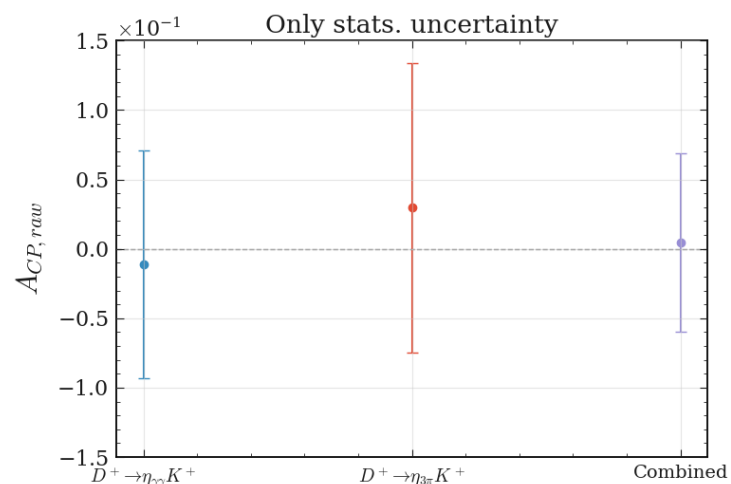
$$D^+ \rightarrow \eta \pi^+$$

- **Stats. uncertainty**



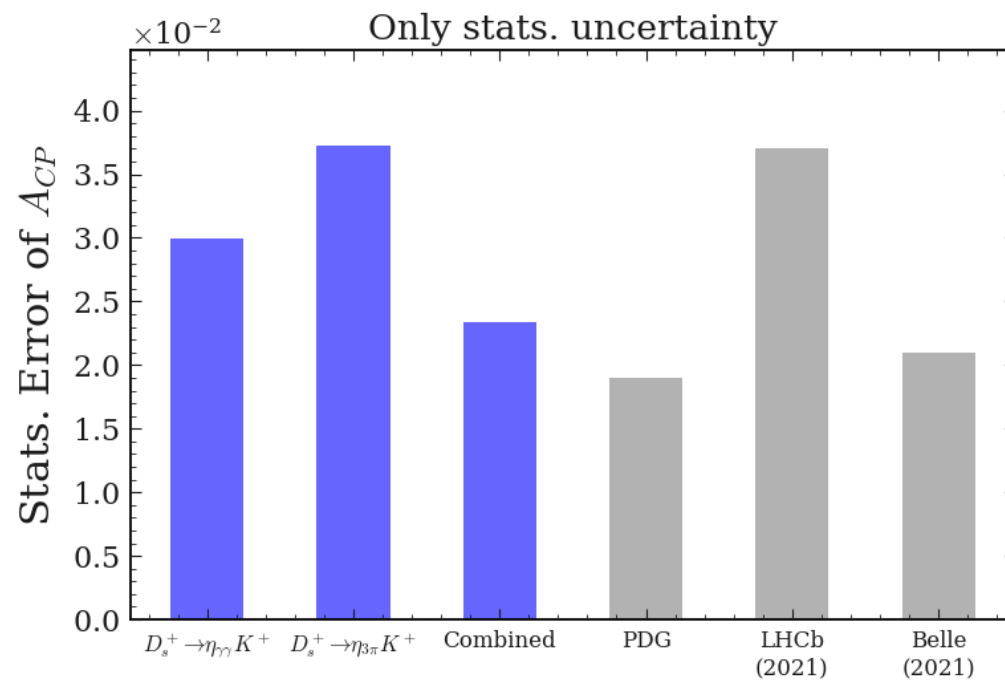
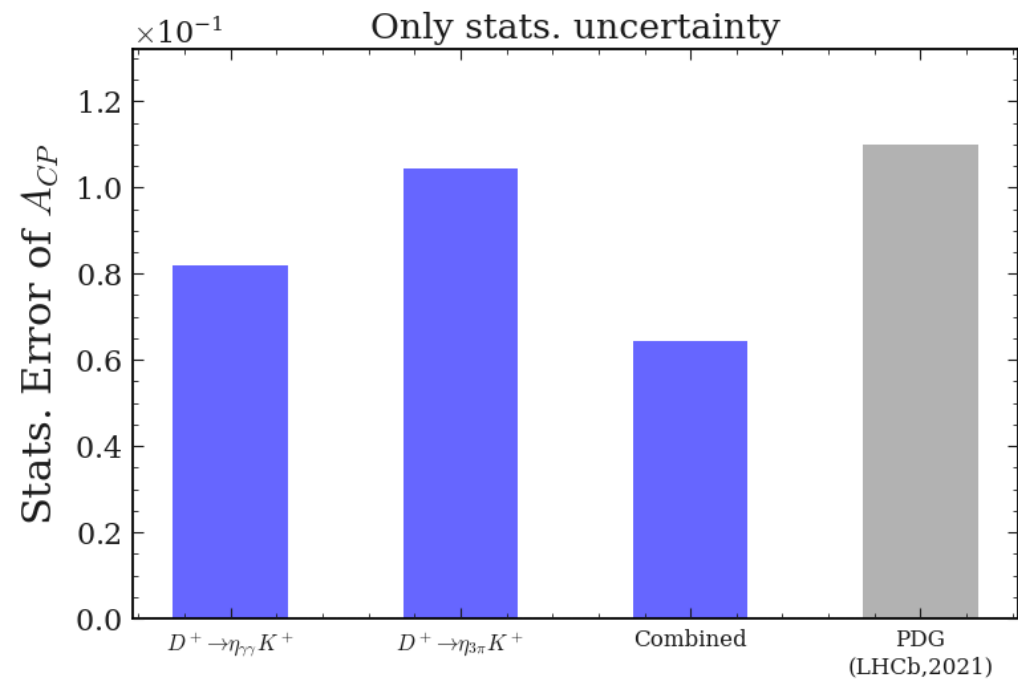
$D^+ \rightarrow \eta K^+$

- Scaled down to 427.87/fb



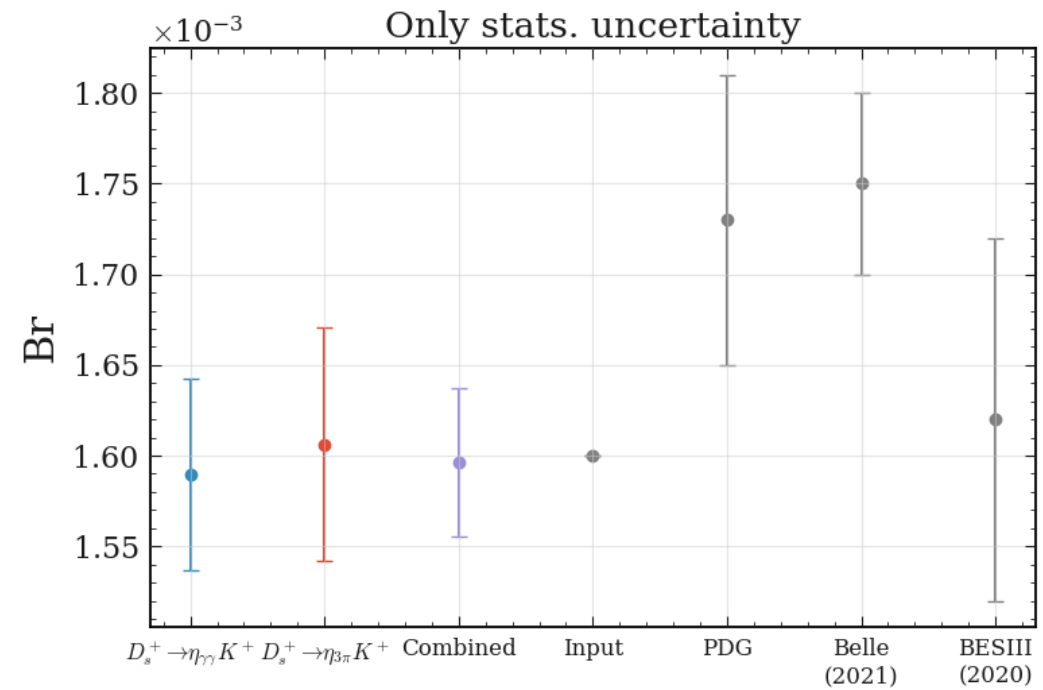
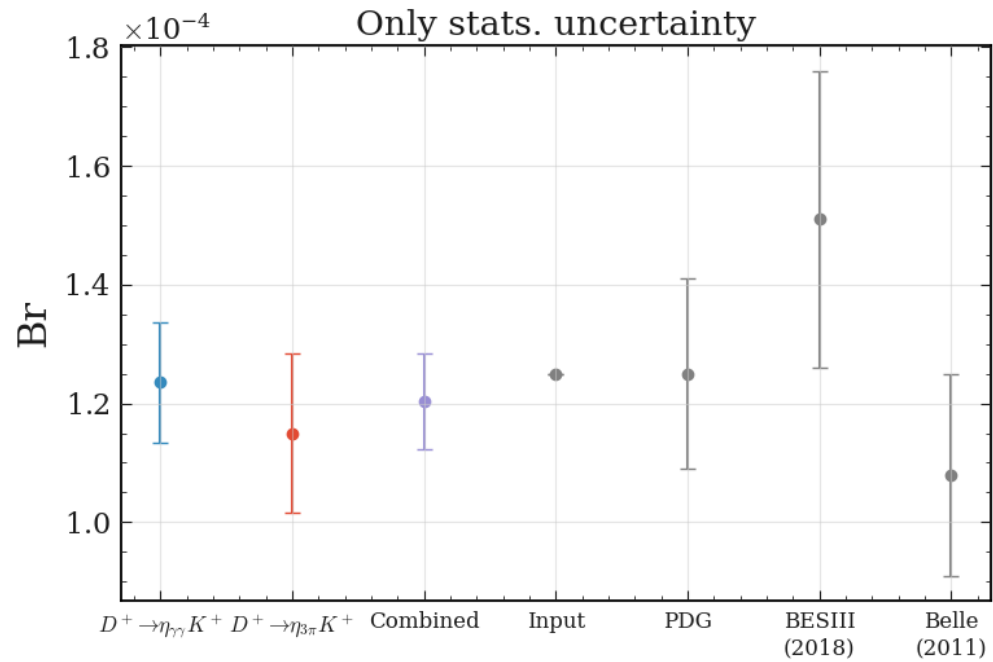
$$D^+ \rightarrow \eta K^+$$

- **Stats. uncertainty**



Branch fraction of $D_{(s)}^+ \rightarrow \eta K^+$

- **Stats. uncertainty**



Backup